

AG Rubber Track

For High-Horsepower Tracked Tractors



Rubber Track Expert

Technological advancements, ingenuity and vast experience drive Bridgestone to design and develop the best AG RubberTrack choice for your tractor.

Bridgestone's commitment to quality is unsurpassed. We develop and produce the raw materials which are used in our RubberTracks, ensuring only the highest quality product reaches our customers.

TREAD

The tread bars and main carcass are vulcanized as one-piece with a seamless molded radius. By using this process the tread bars remain secure on the rubber track. Our new rubber compound provides a 29% improvement in wear resistance and a 39% improvement in cut resistance.



GUIDE LUGS

The guide lugs and main carcass are vulcanized as one-piece with a seamless molded radius. By using this process the guide lugs remain secure on the rubber track. The guide lugs are made of a wear resistant rubber compound for added durability.



INNER SURFACE

The rubber compound formulated for the roller path area of the rubber track provides superior cut resistance.

Track Design Options

Standard Duty (CLS 4, CLS 5)

- Provides excellent ride comfort

Heavy Duty (CLS 6)

- Provides better mud release, high traction, better for softer soil conditions

STRUCTURE

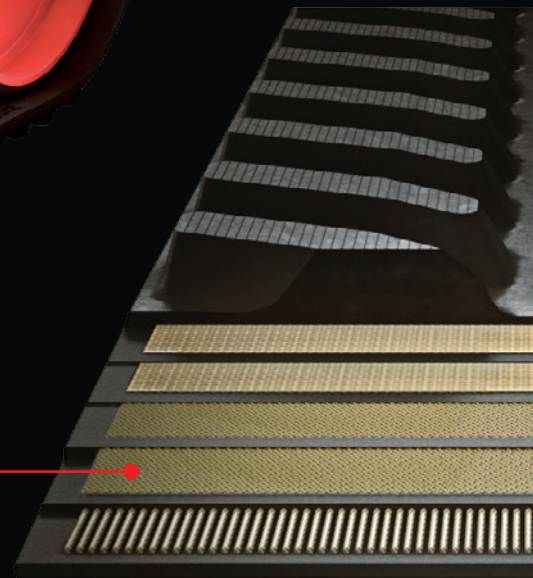


IMPROVED CABLE/PLY PACKAGE DESIGN

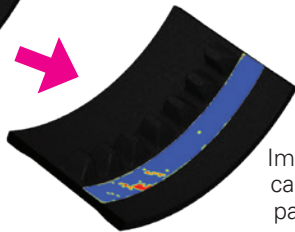
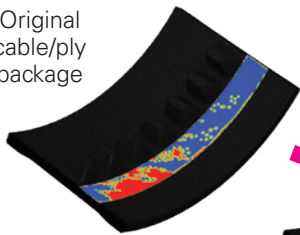
The cable package construction was re-engineered through extensive research to optimize performance.

This improved cable/ply package helps to minimize uneven load distribution, reducing wear and damage to the inner surface of the rubber track.

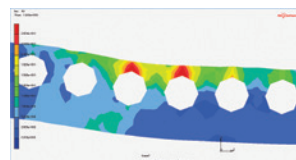
The optimized ply layer design reduces internal stress of the main cables to assure performance throughout the service life of the rubber track.



Original cable/ply package



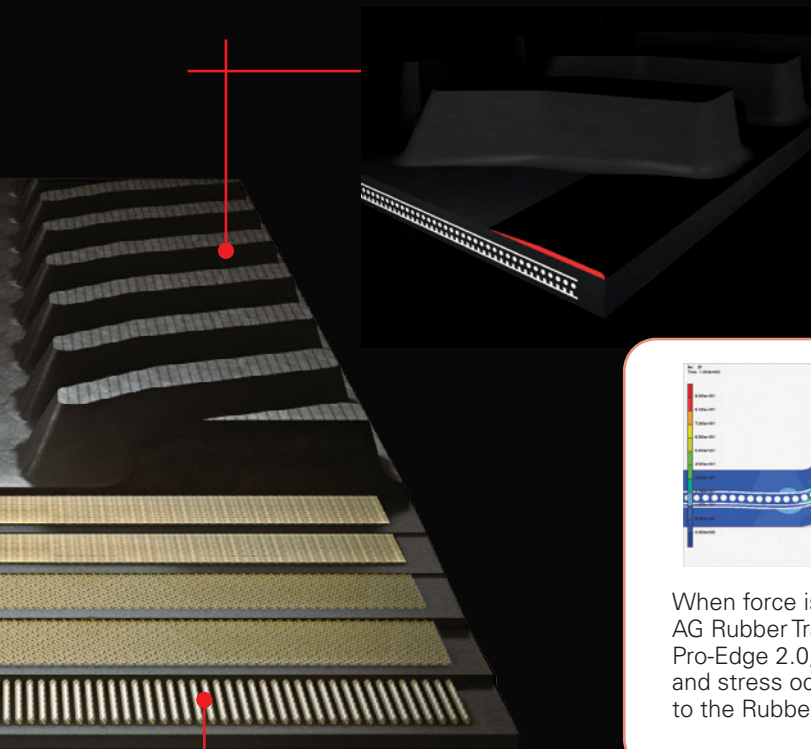
Improved cable/ply package



Original

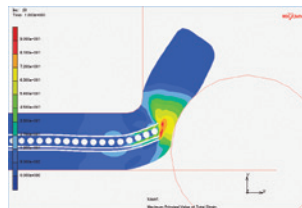


Improved

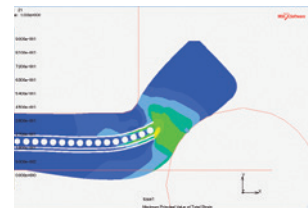


PRO-EDGE 2.0

The addition of this Optimum Sidewall Protection Technology to Bridgestone's AG Rubber Track provides extra protection for the main carcass and additional stiffness.



When force is applied to an AG Rubber Track without Pro-Edge 2.0, high bending and stress occur and damage to the Rubber Track is likely.



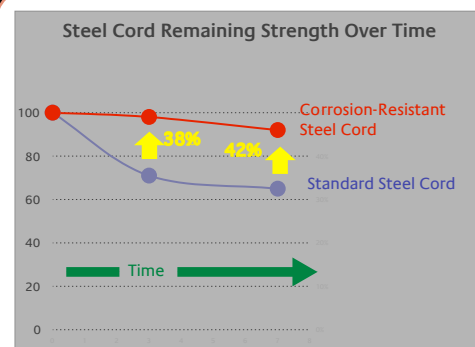
When the same force is applied to an AG Rubber Track with Pro-Edge 2.0, the stress and bending are minimized and therefore the risk of damage is reduced.

TOUGH & FLEXIBLE STEEL CABLE

High performance steel cable is designed to meet the demands of modern high horsepower farm equipment.

A precise balance of tensile strength and flexibility allows for exceptional durability.

Corrosion resistant technologies have been improved even further.





Tread Pattern Appearance Examples



30" wide

**Standard Duty
CLS 4/5**



30" wide

**Heavy Duty
CLS 6**



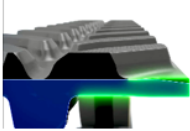
32" wide

**Standard Duty
Positive Drive
CLS 5**



☐ Pro Edge design

Thickest edge thickness
for reliability



☐ Tread chamfers

Less ground disturbance



☐ Wide-under-roller tread bar

Less compaction

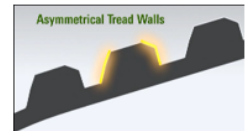
☐ Largest tread surface

Maximize the tread wear life
Low ground contact pressure



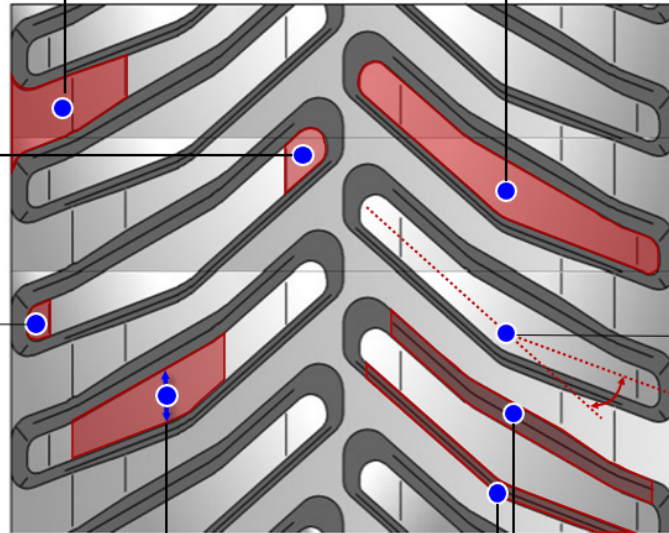
☐ Double angle tread bar

Mud clean out



☐ Asymmetrical tread wall

Less mud lift-up & Better traction



The information contained in this publication is for guidance purposes only. While every effort has been made in its production, no responsibility can be accepted for any loss or damage arising from any undetected error. Any data supplied is subject to possible revision following the date of publication. Produced November 2020.

Contact Your Track Representative for more information.

Tony O'Hanlan

Phone: 702-219-2858

Email: tohanlan@bridgestoneindustrial.com



Bridgestone Industrial Products America Inc.
555 Marriott Dr. Suite 315 Nashville, TN 37217, USA
Tel: +1 615 365 0600
Fax: +1 615 365 9946
www.bridgestoneindustrial.com

Bridgestone Corporation
Yaesu Centre Building 10F, 1-6-6, Yaesu Chuo-ku, Tokyo 103-0028 Japan
Tel: +81 3 5202 6881
Fax: +81 3 5202 6719

www.bridgestoneindustrial.com

Bridgestone, Bridgestone "B", Your Journey, Our Passion, Spiral Technology, Rubber Compounds and No-Wave Cable are trademarks of Bridgestone Corporation or one of its affiliated companies.

The trademarks Deere®, John Deere® and the leaping deer symbol; CAT®, Caterpillar® and Challenger® and their respective logos; AGCO® and Challenger® and their respective logos; are the property of their respective companies, which are not affiliated with Bridgestone Corporation or its subsidiaries.

© 2020 Bridgestone Industrial Products America, Inc. All rights reserved.